

Quick Start Guide – VMT BeadMap RTI

Installation (Hardware)

Connect the hardware components to prepare the system for software setup.

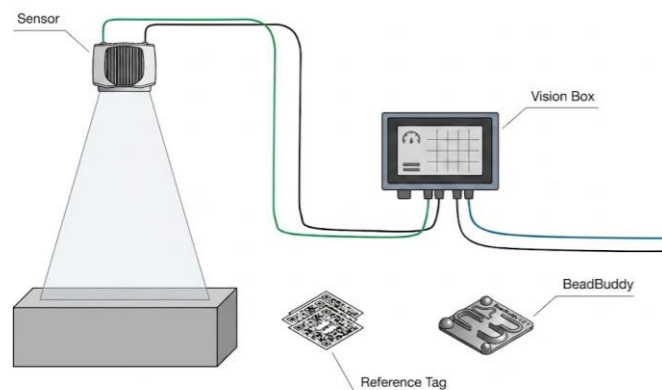
Mechanical

1. Mount the **Vision Box** using the designated mounting brackets.
2. Mount the **sensor** (attached to a suitable adapter plate) **above the part** at $\approx 90^\circ$.

Electrical

Connect the following cables:

1. **Network and supply cables:**
Vision Box → sensor.
2. **Communication cable:**
PLC/robot → Vision Box.
3. **Power supply** to the Vision Box.



Once the main power switch is activated, the system powers up **automatically**. The VMT MSS vision software starts automatically during boot.

Video

Videos guiding through hardware and software commissioning are available on our YouTube page.



<https://www.youtube.com/@VMTGmbH/videos>

Commissioning (Software)

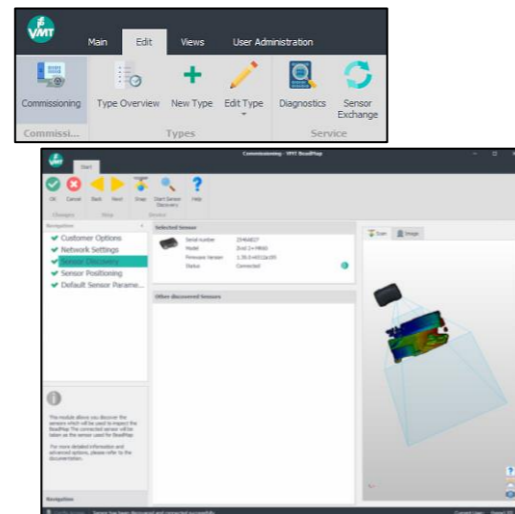
Configure the system in the software. Once completed, the system is ready for part type integration.

Recommended: Use **remote access**¹ for the following steps. For daily operation, the **touch panel** is all you need.

Basic Commissioning

Open the **Commissioning Wizard**² in VMT MSS and follow the guided steps:

Network Configuration	Set up the communication interface to your PLC or robot.
Sensor Discovery	Scan for connected sensors and identifies the device.
Sensor Setup	Position and configure the sensor for your application.



Validation Check

Use the **BeadBuddy** to run a predefined test and verify that the system is operating as intended.

How to start: Place the BeadBuddy within the sensor's field of view, then navigate to **Diagnostics** → **Validation Test** and start the test.

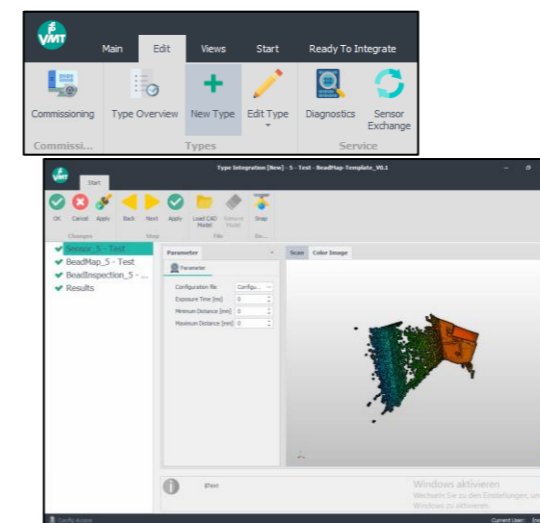
New Type (Software)

Create and integrate a new part type. Once completed, the system is ready to perform measurements in production.

Adding a New Type

Place the part in the correct position below the sensor, then open the **New Type Wizard** in VMT MSS and follow the guided steps:

Sensor Setup	Adjust the general sensor configuration for the part.
Bead Path	Set the bead path to be inspected.
Bead Inspection	Define detection parameters and limits for the bead.



Functional Test

The system performs multiple acquisitions on your part to verify system stability under real process conditions.

How to start: Navigate to **Diagnostics** → **Functional Test** and start the test.

Remote Access¹

To access the system remotely, connect your computer to the Vision Box via the **"Service Port"**, then follow these steps:

1. Set your computer's IP address to **192.168.100.1**
2. Open a browser and navigate to **192.168.100.100**
3. Enter the password **VMT**

The system is now ready for remote configuration.

Password²

Log in to the MSS software via the **User Administration** tab using the following credentials:

User	Default
Password	BeadBuddy5

Manual

For detailed information on all steps, software, and components, refer to the full manual, available in the software or via the link below.

